

SECTION 1 : NUMBERS OF HIGHER EDUCATION ENROLMENTS IN WALES 2004/05

- 1 On the basis of the HESES 2004 survey there were estimated to be 113,219 enrolments on HE courses at those institutions that are in receipt of HEFCW funding during 2004/05. These figures cover all enrolments, including those who are not eligible for HEFCW funding. The numbers of enrolments by funding category and mode of attendance are given in Table 1.1.

Table 1.1 : Enrolments on Higher Education Courses in Wales : 2004/05

Funding Category	Full-time	Sandwich Year Out*	Part-time	Total
Home and EC				
Fundable	59,139	741	38,735	98,615
Non-Fundable	5,542	15	1,779	7,336
Island and Overseas	6,291	19	958	7,268
Total	70,972	775	41,472	113,219

* Sandwich year out counted as 1

- 2 The majority (87 per cent) of the enrolments related to students resident in the United Kingdom or the European Community or otherwise entitled to pay home fees (home and EC) who were eligible for funding, while 7 per cent of home and EC enrolments were ineligible for funding, either because the place taken by the student was fully funded from public sources, or was privately funded. The remaining students were resident overseas, in the Channels Islands or the Isle of Man.
- 3 Table 1.2 shows fundable enrolments by mode of attendance (mode), level of study (level) and Academic Subject Category (ASC). Full-time and sandwich year out students made up 61 per cent of the total number of fundable students, with the remainder studying part-time. The part-time numbers include 4,459 undergraduate students who are taught under franchise arrangements. There are also some franchised out students in other modes and levels but these are not identified separately in this circular.
- 4 Among the full-time students, the largest number of enrolments lie in the *Science* ASC for undergraduates, *Initial Teacher Training (QTS)* for postgraduate taught and *Science* for postgraduate research. Sandwich year out students were mainly enrolled on *Science*, *Humanities* and *Business and Management* courses. More part-time students were enrolled on *Humanities* undergraduate taught and postgraduate research courses than on courses in other ASCs. The largest numbers of postgraduate taught enrolments were in *Business and Management*.
- 5 More detailed information on enrolments is provided at Annex A. This annex includes the number of fundable enrolments/credit values in 2004/05 in each ASC for full-time/sandwich year out and part-time modes of study for each institution. Separate tables are provided for each level of study. Annex A shows the number of enrolments by mode, level and institution and by funding category.
- 6 Figure 1.1 shows the number of fundable enrolments by mode of attendance for each institution. The largest numbers of students were enrolled at Cardiff University (21 per cent) and University of Glamorgan (19 per cent). Of the 741 fundable sandwich year out enrolments, 32 per cent were enrolled at Cardiff University, 19 per cent by the University of Wales, Aberystwyth and 18 per cent by the University of Glamorgan. The University of Glamorgan accounted for 26 per cent of all part-time enrolments, and the University of Wales, Newport accounted for 43 per cent of undergraduate franchised out enrolments.

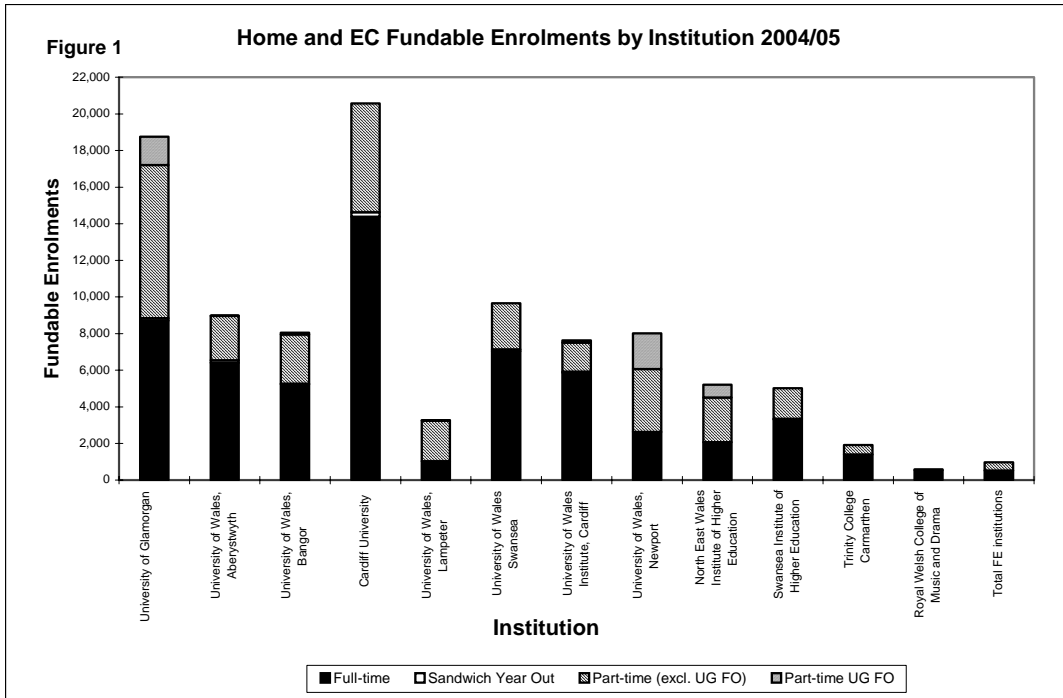
Table 1.2 : Fundable Enrolments by Mode, Level and Academic Subject Category 2004/05

ASC		Full-time			
		Undergraduate Degree	Undergraduate Non-degree	Postgraduate Taught	Postgraduate Research
1	Clinical and Pre-clinical Subjects	1,622	0	34	86
2	Subjects and Professions Allied to Medicine	1,402	325	303	35
3	Science	10,739	461	506	642
4	Engineering & Technology	3,200	266	71	173
5	Built Environment	773	67	104	31
6	Mathematical Sciences, IT & Computing	2,717	434	142	108
7	Business and Management	5,036	931	402	27
8	Social Sciences	6,441	17	638	123
9	Humanities	9,291	144	571	194
10	Art, Design & Performing Arts	5,645	615	152	56
11aa	Education ITT (QTS) Primary	1,904	0	495	0
11ab1	Secondary shortage	267	0	651	0
11ab2	Secondary non-shortage	9	0	376	0
11b	Education (Non-QTS)	846	39	27	5
Total		49,890	3,299	4,470	1,480

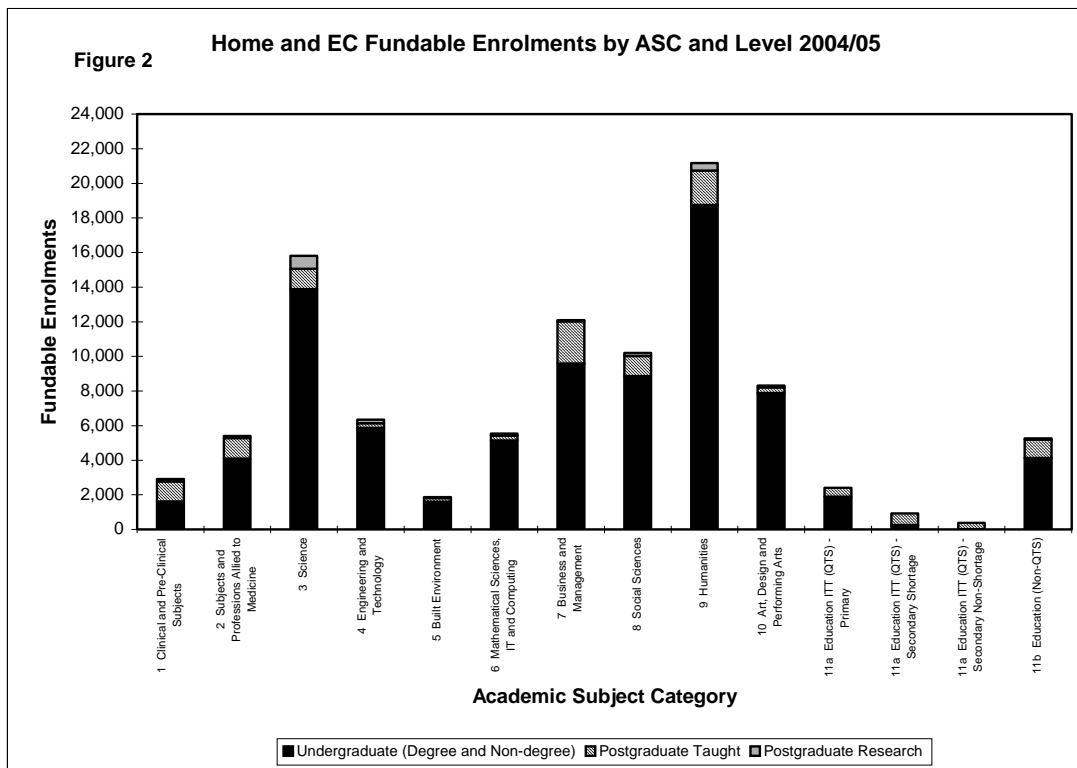
ASC		Sandwich Year Out*			
		Undergraduate Degree	Undergraduate Non-degree	Postgraduate Taught	Postgraduate Research
1	Clinical and Pre-clinical Subjects	0	0	0	0
2	Subjects and Professions Allied to Medicine	19	0	0	0
3	Science	146	40	0	0
4	Engineering & Technology	83	0	0	0
5	Built Environment	95	0	0	0
6	Mathematical Sciences, IT & Computing	89	0	0	0
7	Business and Management	140	2	0	0
8	Social Sciences	9	0	0	0
9	Humanities	107	0	0	0
10	Art, Design & Performing Arts	10	0	0	0
11aa	Education ITT (QTS) Primary	0	0	0	0
11ab1	Secondary shortage	0	0	0	0
11ab2	Secondary non-shortage	0	0	0	0
11b	Education (Non-QTS)	2	0	0	0
Total		699	42	0	0

* Sandwich Year Out counted as 1

ASC		Part-time		
		Undergraduate	Postgraduate Taught	Postgraduate Research
1	Clinical and Pre-clinical Subjects	0	1,109	56
2	Subjects and Professions Allied to Medicine	2,343	892	78
3	Science	2,511	651	118
4	Engineering & Technology	2,330	191	31
5	Built Environment	667	100	20
6	Mathematical Sciences, IT & Computing	1,894	143	24
7	Business and Management	3,483	2,029	55
8	Social Sciences	2,394	529	50
9	Humanities	9,220	1,417	233
10	Art, Design & Performing Arts	1,606	188	36
11aa	Education ITT (QTS) Primary	0	0	0
11ab1	Secondary shortage	3	0	0
11ab2	Secondary non-shortage	0	0	0
11b	Education (Non-QTS)	3,245	1,045	48
Total		29,694	8,292	749



7 Figure 2 shows the fundable enrolments by ASC and level of study. Undergraduates accounted for 95 per cent of enrolments in *Art, Design and Performing Arts*. In contrast on 59 per cent of enrolments in *Initial Teacher Training (QTS)* were undergraduates, the rest being on postgraduate taught courses. Postgraduate research enrolments as a proportion of all enrolments in ASC were highest in *Clinical and Pre-clinical Subjects* (5 per cent).



INITIAL TEACHER TRAINING (QTS) FUNDABLE ENROLMENTS

- 8 Table 3 shows the actual number of fundable full-time enrolments on ITT courses leading to QTS registered between 1 August 2004 and 1 November 2004. This method of counting enrolments differs from that used elsewhere in the circular and reflects the method used for funding ITT (QTS) which is not based on credit values. Note however, that the numbers shown for ASC 11a in all other tables in this circular are on the same basis as other figures in the tables (i.e. including predictions and excluding non-completions).

Table 3 : Fundable Full-time Initial Teacher Training (ASC 11a) Enrolments by Subject and Level 2004/05

Subject	Level		Total
	Undergraduate	Postgraduate Taught	
Primary Education	1,943	500	2,443
Secondary shortage subjects:			
Biology	4	60	64
Chemistry	0	35	35
Design and Technology	111	67	178
Drama	90	19	109
English	0	121	121
French	17	69	86
General/ Integ Science	0	54	54
German	0	9	9
Information Technology	0	53	53
Italian	0	2	2
Mathematics	45	97	142
Other Modern Languages	0	1	1
Other Science	0	0	0
Physics	0	30	30
Spanish	0	7	7
Welsh	19	43	62
Secondary non-shortage subjects:			
Art	0	79	79
Business Studies	0	22	22
Geography	0	49	49
History	0	77	77
Music	9	26	35
Physical Education	0	95	95
Religious Education	0	33	33
Outdoor Activities ¹	0	4	4
Total	2,238	1,552	3,790

1 There were 15 enrolments at University of Wales, Bangor who studied Outdoor Activities. Eleven enrolments combined Outdoor Activities with another subject, under which the students are recorded in Table 3. The subject with which Outdoor Activities was combined and the number of enrolments involved were: Biology (4); Mathematics (3); French (2); Information Technology (1) and Physics (1).

- 9 Almost two thirds (64 per cent) of the 3,790 enrolments were to primary education courses. Over two thirds (71 per cent) of enrolments to secondary education courses were to shortage areas, which are identified, by subject, in Table 3.

GROWTH IN FUNDABLE ENROLMENTS 1995/96 TO 2004/05

10 This section shows the growth of fundable enrolments over the last 10 years. Figure 3 shows changes in fundable enrolments for undergraduates since 1995/96 and Figure 4 provides comparable figures for postgraduates.

Figure 3 : Fundable Undergraduate Enrolments : 1995/96 to 2004/05

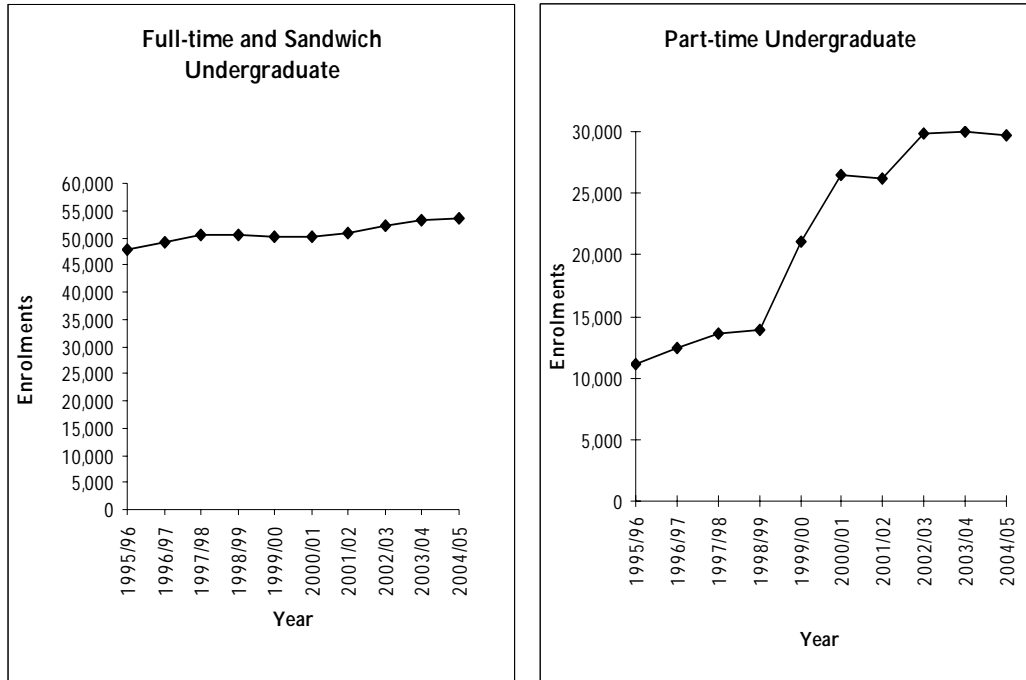
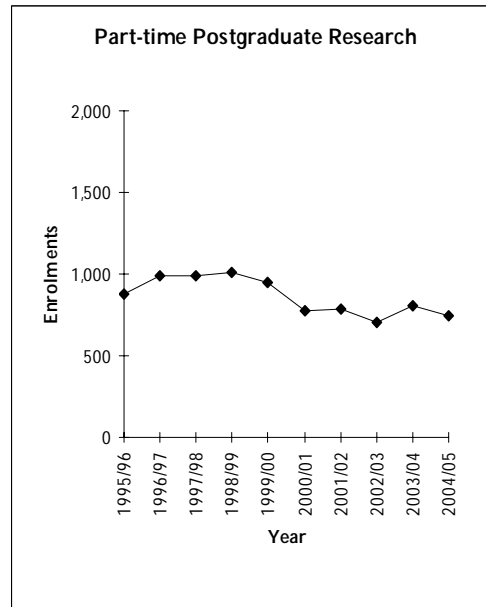
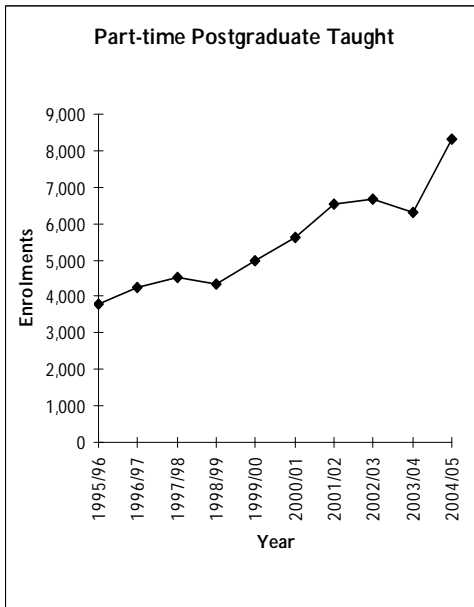
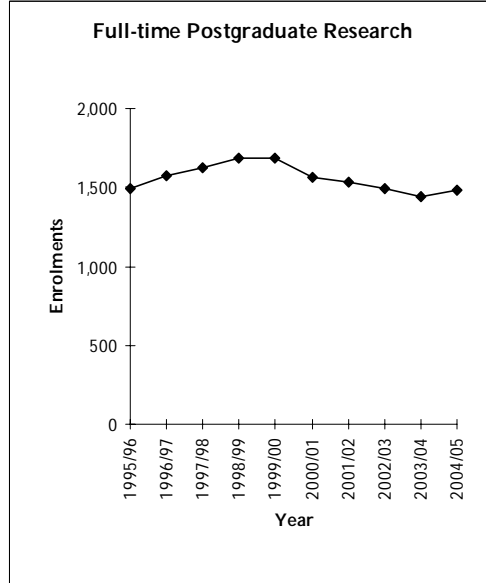
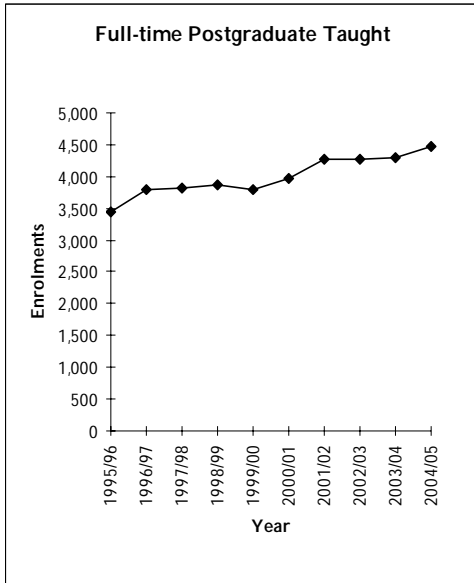


Figure 4 : Fundable Postgraduate Enrolments : 1995/96 to 2004/05



**GROWTH IN FUNDABLE POSTGRADUATE RESEARCH ENROLMENTS BY INSTITUTION
2003/04 TO 2004/05**

11 Table 1.4 shows that overall, the total number of postgraduate research enrolments stayed fairly constant between 2003/04 and 2004/05. Large percentage increases and decreases occurred amongst the HE institutions, but the numbers involved were small.

Table 1.4 : Change in Fundable Postgraduate Research Enrolments by Institution

Institution	Full-time			Part-time		
	2003/04	2004/05	% change	2003/04	2004/05	% change
University of Glamorgan	125	128	2.4	194	131	-32.5
University of Wales, Aberystwyth	159	158	-0.6	29	32	10.3
University of Wales, Bangor	136	166	22.1	105	97	-7.6
Cardiff University	669	680	1.6	216	225	4.2
University of Wales, Lampeter	24	29	20.8	53	86	62.3
University of Wales Swansea	274	290	5.8	139	126	-9.4
University of Wales Institute, Cardiff	14	14	0.0	45	39	-13.3
University of Wales, Newport	19	8	-57.9	5	2	-60.0
North East Wales Institute of Higher Education	19	6	-68.4	6	0	
Swansea Institute of Higher Education	3	1	-66.7	13	11	-15.4
Trinity College Carmarthen	0	0		0	0	
Royal Welsh College of Music and Drama	0	0		0	0	
Total	1,442	1,480	2.6	805	749	-7.0